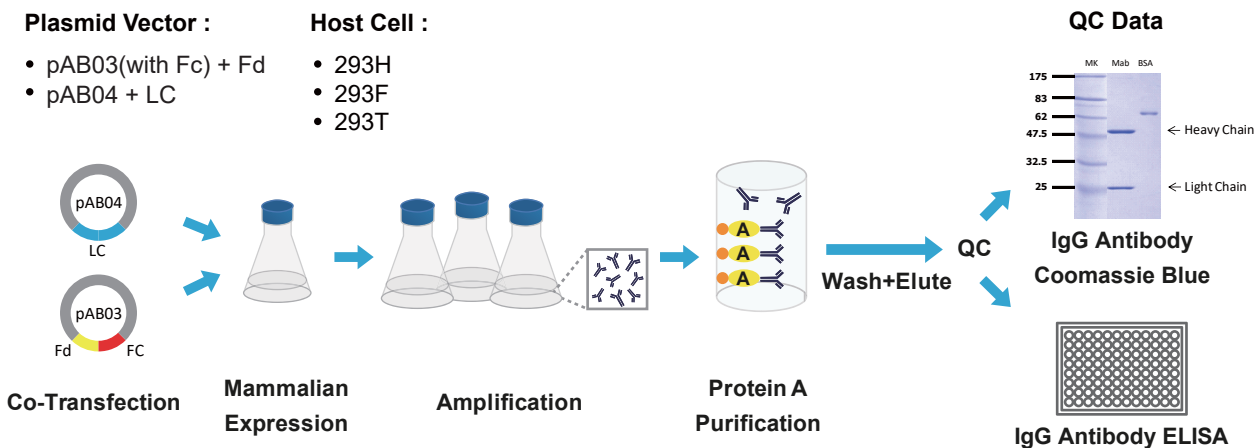


Custom Service for Transient Antibody Production

We provide a fast and reliable scale-up monoclonal antibody from transient production. Utilizing a dual high-copy vector system, F(ab)2 and Fc fragments are co-transfected into a mammalian cell line. These transfected cells are then amplified in optimized serum-free, suspension culture, and the expressed antibodies are purified with affinity chromatography. Final products are quality-tested with IgG antibody SDS-PAGE Coomassie Blue staining and ELISA. Transient antibody production has the ability to produce the desired quantity of up to 100mg within 2-3 weeks.

Workflow



Advantages

- High Affinity Antibody
- Diverse Antibody Repertoire
- No Immunologic Tolerance
- Scalable Antibody Production
- More Stable Antibody Clone
- Antibody Engineering

Applications

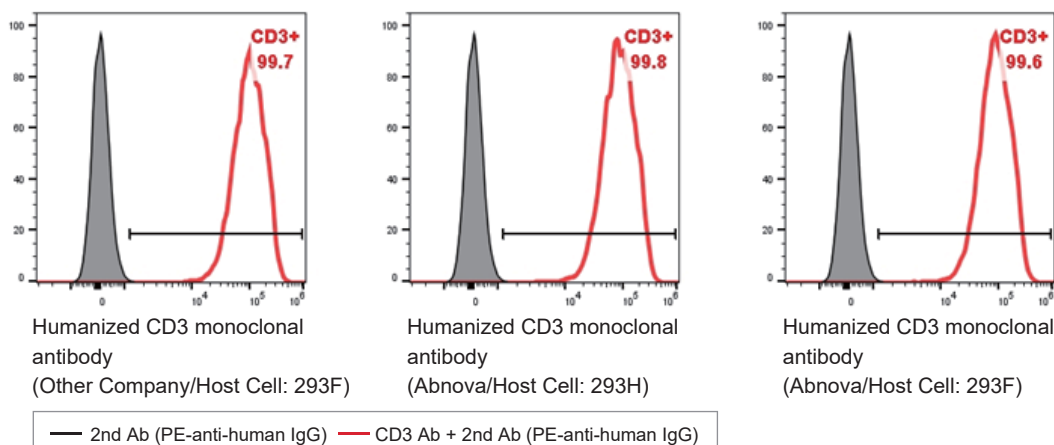
- High Affinity Antibody
- Rabbit Monoclonal Antibody
- Modification-State Antibody
- Anti-Idiotypic Antibody
- Antibody Pairing and ELISA Kit
- Research and *In Vitro* Diagnostic

Example

Antibody Concentration versus Yield

	Production Site	Host Cell	Antibody Concentration (µg/uL)	Yield (Mab µg/Culture Sup mL)
Humanized CD3 monoclonal antibody	Other Company	293F	1.08	10
	Abnova	293H	4.84	70
		293F	1.52	30

Flow Cytometry



Flow cytometry of human CD3 T cells stained humanized CD3 monoclonal Ab (1 µg/5*10⁵ cells) and counterstained with PE anti-human IgG Ab (1 µg/5*10⁵ cells).