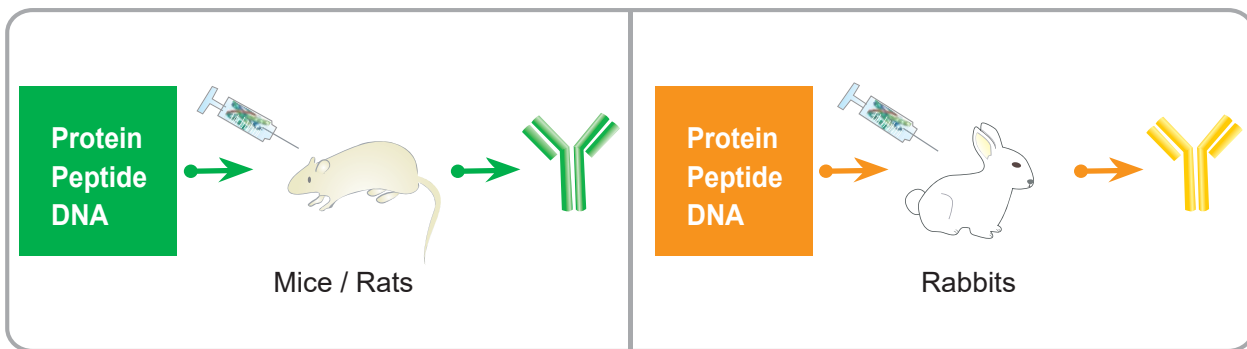


## Custom Service for Polyclonal Antibody Production

Abnova has extensive experience in generating high quality antisera to a wide variety of antigens (peptides, phospho-peptides, proteins, and DNAs). Using a low dose immunization technique in combination with a proprietary adjuvant, we are able to generate a high-titer, high-affinity antibody response against the immunogen in mice, rats, and rabbits.

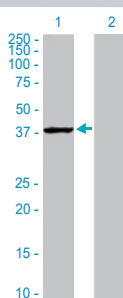


### Western Blot (Transfected Lysate)

**Product Name :** GAPDH purified MaxPab<sup>®</sup> rabbit polyclonal antibody (D01P)  
**Catalog # :** H00002597-D01P

Western Blot analysis of GAPDH expression in transfected 293T cell line by GAPDH MaxPab<sup>®</sup> rabbit polyclonal antibody.

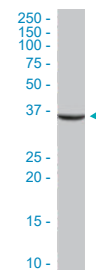
Lane 1: GAPDH transfected lysate(36.10 KDa)  
 Lane 2: Non-transfected lysate



### Western Blot (Tissue Lysate)

**Product Name :** ASPA purified MaxPab<sup>®</sup> rabbit polyclonal antibody (D01P)  
**Catalog # :** H00000443-D01P

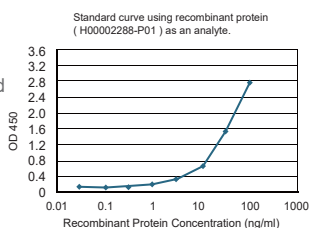
ASPA MaxPab<sup>®</sup> rabbit polyclonal antibody. Western Blot analysis of ASPA expression in human liver.



### Detection Antibody Pair

**Product Name :** Human FKBP4 Matched Antibody Pair  
**Catalog # :** H00002288-AP31

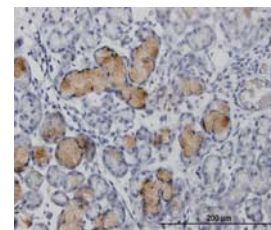
- Capture antibody: affinity purified rabbit MaxPab<sup>®</sup> polyclonal anti-FKBP4
- Detection antibody: biotinylated affinity purified MaxPab<sup>®</sup> polyclonal anti-FKBP4



### Immunohistochemistry

**Product Name :** MMP1 purified MaxPab<sup>®</sup> rabbit polyclonal antibody (D01P)  
**Catalog # :** H00004312-D01P

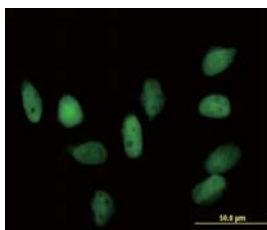
Immunoperoxidase of purified MaxPab<sup>®</sup> rabbit antibody to GOT1 on formalin-fixed paraffin-embedded human colon. [antibody concentration 3 ug/ml]



### Immunofluorescence

**Product Name :** CBX5 purified MaxPab<sup>®</sup> rabbit polyclonal antibody (D01P)  
**Catalog # :** H00023468-D01P

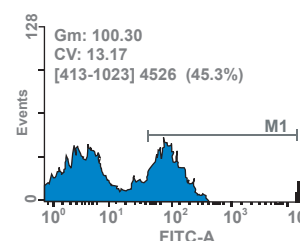
Immunofluorescence of purified MaxPab<sup>®</sup> rabbit antibody to CBX5 on HeLa cell. [antibody concentration 10 ug/ml]



### Flow Cytometry

**Product Name :** FAS purified MaxPab<sup>®</sup> rabbit polyclonal antibody  
**Catalog # :** H00000355-D01P

Surface staining of human peripheral blood cells with anti-human CD95 (FAS) FITC.



## Mouse & Rat

Service Items	Time (weeks)	Antigen Supplied by Customer			Antigen Supplied by Abnova						
					Peptide		Phosphopeptide	Protein		DNA	
<b>Peptide Design &amp; Synthesis</b>	4 ~ 5										
Customer-supplied antigen		V	V	V							
7~20-mer (Purity > 80%)					V	V	V				
Single site phosphorylation (Ser, Tyr, Thr)							V				
<b>Conjugation</b>	1				V		V				
To carrier protein KLH / BSA / OVA (A cysteine is automatically added to the C-terminus or N-terminus of the peptide)											
<b>Protein Preparation</b>	2~3										
DNA sourcing								V	V		
Cloning and sequencing											
Protein expression											
<b>DNA Preparation</b>											
DNA sourcing										V	V
Cloning and sequencing											
<b>Immunization</b>	8 ~ 12				V	V	V	V	V	V	V
5~8 injections per animal (3 mice or 3rats)											
Sera collection											
<b>Report</b>	1				V	V	V	V	V	V	V
ELISA data*										V	V
WB data (mammalian overexpression lysate)										V	V
<b>Purification**</b>	2										
By protein A purification Final deliverable: > 0.2 mg purified antibody for mice or > 5 mg purified antibody for rats			V		V			V		V	
By affinity purification (for rats only) Final deliverable: > 0.5 mg purified antibody				V		V	V		V		V
<b>Total Lead time (weeks)</b>		<b>10~12</b>	<b>12~14</b>	<b>12~14</b>	<b>17~20</b>	<b>17~20</b>	<b>17~20</b>	<b>19~20</b>	<b>19~20</b>	<b>12~16</b>	<b>12~16</b>
<b>Total Price (USD/EUR)</b>		<b>Quote</b>	<b>Quote</b>	<b>Quote</b>	<b>Quote</b>	<b>Quote</b>	<b>Quote</b>	<b>Quote</b>	<b>Quote</b>	<b>Quote</b>	<b>Quote</b>

## Rabbit

Service Items	Time (weeks)	Antigen Supplied by Customer			Antigen Supplied by Abnova						
					Peptide		Phosphopeptide	Protein		DNA	
<b>Peptide Design &amp; Synthesis</b>	4 ~ 5										
Customer-supplied antigen		V	V	V							
7~20-mer (Purity > 80%)					V	V	V				
Single site phosphorylation (Ser, Tyr, Thr)							V				
<b>Conjugation</b>	1				V	V	V				
To carrier protein KLH / BSA / OVA (A cysteine is automatically added to the C-terminus or N-terminus of the peptide)											
<b>Protein Preparation</b>	2~3										
DNA sourcing								V	V		
Cloning and sequencing											
Protein expression											
<b>DNA Preparation</b>											
DNA sourcing										V	V
Cloning and sequencing											
<b>Immunization</b>	10 ~ 12				V	V	V	V	V	V	V
5~8 injections per rabbit (2 rabbits)											
Sera collection											
<b>Report</b>	1				V	V	V	V	V	V	V
ELISA data*										V	V
WB data (mammalian overexpression lysate)										V	V
<b>Purification**</b>	2										
By protein A purification Final deliverable: 20-50 mg purified antibody			V		V			V		V	
By affinity purification Final deliverable: 1-5 mg purified antibody			V		V	V		V		V	
<b>Total Lead time (weeks)</b>		<b>11~14</b>	<b>13~16</b>	<b>13~16</b>	<b>17~20</b>	<b>17~20</b>	<b>17~20</b>	<b>19~20</b>	<b>19~20</b>	<b>12~16</b>	<b>12~16</b>
<b>Total Price (USD/EUR)</b>		<b>Quote</b>	<b>Quote</b>	<b>Quote</b>	<b>Quote</b>	<b>Quote</b>	<b>Quote</b>	<b>Quote</b>	<b>Quote</b>	<b>Quote</b>	<b>Quote</b>

**Note:** \* Polyclonal antibody sera will be QC utilizing ELISA format for reactivity against the immunogen.  
 \*\* This is the average yield. Actual yield will vary for each Pab.